



GAME RULES

Before you start: place the game board and puzzle pieces with the blue sides upwards

- 1 Choose a challenge
- 2 Place the 4 puzzle pieces on the game board, to hide all animals - except the ones pictured in your challenge, which remain in the open.

The game rules for the night side are identical to the rules for the day side, except that all puzzle pieces now occupy the same area, there are not 4 distinct areas. You still have to expose the animals indicated in the challenges, but you also have to make sure that the 4 puzzle pieces fit together on the game board.

- 3 There is only 1 solution per challenge, which is shown at the end of the booklet.



1

2

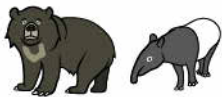


3



4





5



6



7



8





9



10



11



12



13



14



15



16



17



18



19



20



21



22



23



24



25



26



27



28



29



30



31



32



33



34



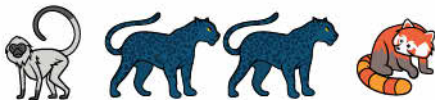
35



36



37



38



39



40



SOLUTIONS

1



2



3



4



SOLUTIONS

5



6



7

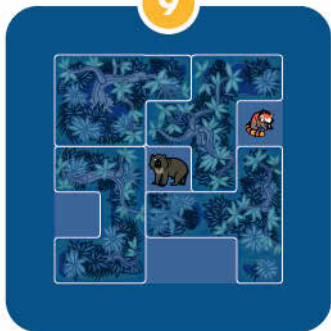


8



SOLUTIONS

9



10



11



12



SOLUTIONS

13



14



15



16



SOLUTIONS

17



18



19



20



SOLUTIONS

21



22



23



24



SOLUTIONS

25



26



27



28



SOLUTIONS

29



30



31



32

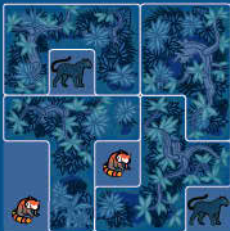


SOLUTIONS

33



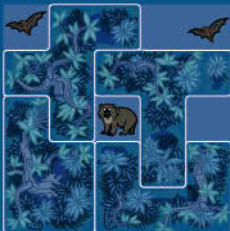
34



35



36



SOLUTIONS

37



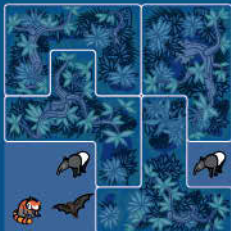
38



39



40



www.SmartGames.eu



www.SmartGamesUSA.com



©2015 Concept, game design & artwork:
SMART - Belgium. All rights reserved.
Designer: Raf Peeters
Original product name:
Neerveld 14, B-2550 Kontich, Belgium
info@smart.be www.SmartGames.eu

dd 20160510 B made in China

